

M500

POWERED BY



RELIABLE AND
MOST FUEL EFFICIENT

Aumark M-500 is designed for meeting the Pakistani users' pursuit of efficient and hassle-free logistics. This world class truck is designed for vast special applications* including cargo truck, refrigerator truck, dump truck, sanitation truck and aerial cargo.

4x2 Rigid Truck | 172 ps | 18 Ton GVW



TECHNOLOGY
LEADING INTO THE FUTURE.



TECHNOLOGY LEADING INTO THE FUTURE

SPECIFICATIONS*

PERFORMANCE

Max. Speed	80 km / hr.
Max. Gradeability	26%

ENGINE

Model	Cummins EQB170-20
Type	6-Cylinder, in-line, Turbo charged
Bore x Stroke	102mm x 120mm
Max. Output	172 ps
Max. Torque	57 kgf.m
Displacement	5900 cc
Emission	EURO II

CLUTCH

Type	Single disc, dry type, diaphragm spring
Size(mm)	Ø395 (15.5")

TRANSMISSION

Model	Fast 6J70TA			
Type	6 Forward+1 Reverse DD transmission, 2nd-5th Synchronesh			
Ratios	1st	8.690	5th	1.340
	2nd	5.000	6th	1.000
	3rd	2.960	Reverse	8.550
	4th	1.860	Final Gear Ratio	6.166

AXLE

Front	Reverse Elliot, "I" beam
Rear	Whole banjo type

BRAKES

Service	Dual circuits pneumatic brake
Parking	Energy-accumulating spring air cut-off brake
Auxiliary	Exhaust brake

STEERING

Type	Power Steering (mechanical circular ball type)
------	--

SUSPENSION

Front	Longitudinal laminated leaf springs with hydraulic double acting telescope shock absorbers, semi elliptic
Rear	Longitudinal laminated leaf springs, semi elliptic

TYRE

Size	10.00-20
No. of Tires	7 including 1 spare tire

FUEL TANK

Capacity	260 Liters
----------	------------

ELECTRICAL SYSTEM

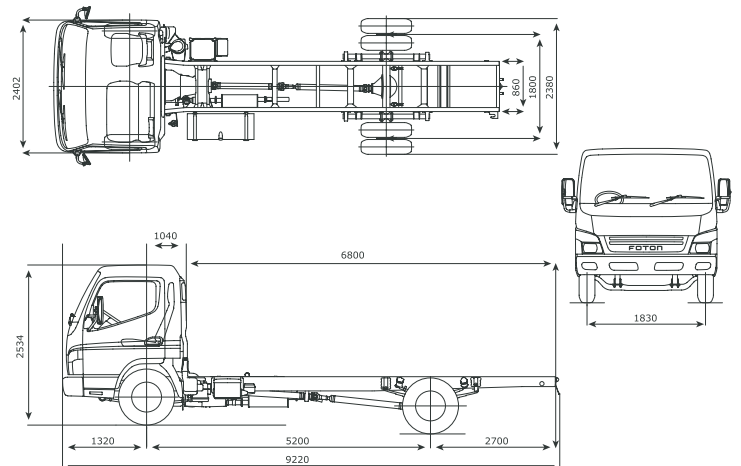
Battery	2 x 12 Volt, 100 AH
Generator	24 Volt

WEIGHT

Permissible Gross Vehicle Weight	kg	18000
Kerb Weight	kg	4700

DIMENSIONS

Wheelbase	mm	5200	Ground Clearance	mm	250
Overall Length	mm	9220	Cab to Rear Axle	mm	4100
Overall Width	mm	2402	Cab to End of Frame	mm	6800
Overall Height Approx.	mm	2534	Front Overhang	mm	1320
Tread Front	mm	1830	Rear Overhang	mm	2400
Tread Rear	mm	1800			



CAB

Tilt type with torsion bar, all steel welded construction

*Specifications are with normal manufacturing allowances & are subject to change without prior notice due to our on-going research & development program or to meet local & Government requirements. Original product may vary from the one presented in this flyer.

Find our authorized dealerships at :

KARACHI

• Master Motor Corp. Pvt. Ltd.
I 68-E, P.E.C.H.S, Khalid Bin Waleed Road, Karachi.
Tel: 021-111-627-837, 0301-8260219, 0300-2403656

• Master Apollo Motors
Near PNS Raza, Adjacent Navy Graveyard,
Dalmia Road, Karachi.
Tel: 021-99245309

• Master Highway Motors
Plot #R-21 Quetta Town Scheme-33, Super Highway,
Karachi
Tel: 021-34922663, 0300-9201985

LAHORE

Master Motor Corp. Pvt. Ltd.
17 Km-Multan Road, Lahore.
Tel: 042-35456900-8, 0302-8285535, 0301-8284397

PESHAWAR

Master Peshawar Motors
Jagra Stop, Main GT Road, Opposite Marwat Filling
Station, Peshawar Tel: 091-3580098-9

MULTAN

Master Al Khair Motors.
Near Daewoo Bus Terminal, Khanewal Road.
Tel: 061-6781690, 0302-8203025, 0301-8720013

FAISALABAD

Master Motor Corp. Pvt. Ltd.
Guttwala Chowk, Sheikhpura Road, Faisalabad
Tel: 041-8507183, 0301-8224192, 0301-8262988

ISLAMABAD

• Master Motor Corp. Pvt. Ltd.
Flat no.415, 4th floor; Rizwan Arcade, Adamjee Road, Saddar, Rawalpindi
Tel: 051-5120428, 0302-88610052, 0301-8260213

TARNOL

• Master Capital Motors
Near PSO Pump Dhoke Paracha, main GT Road, Tarnol
Tel: 051-2226840, 0300-8560508

*APPLICATIONS



Cargo



Tanker



Garbage Collector



Fire Fighting Truck



Cargo with Crane



Van



Dump Truck



Troop Truck